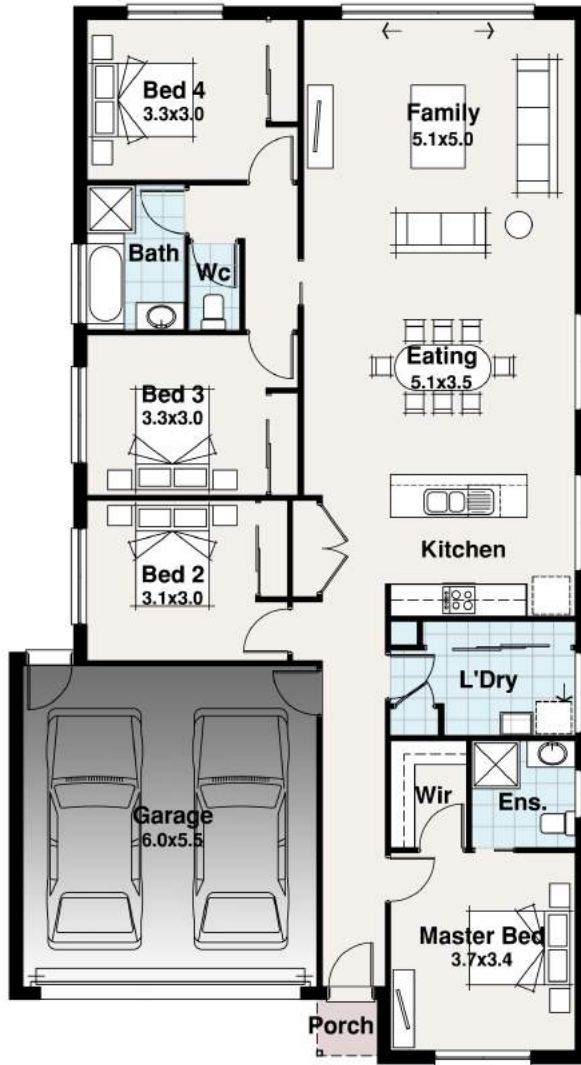




Quay West Facade Pictured







CARIBBEAN RANGE



BLOCK 26.80m

12.00m

-  4
-  2
-  2
-  1



The Montego 1

Width 10.80m
Length 19.73m

Residence	154.32	m ²
Porch	1.18	m ²
Garage	36.04	m ²
TOTAL	191.54	m²
	20.61	sq

The Montego 1

For the big family on a tight budget. The Montego offers 4 bedrooms, full Laundry and Ensuite / Walk-in-robe. The smart Galley Kitchen overlooks the generous open Meals and Family areas. Designed to fit 12m wide blocks, The Montego offers a large opportunity for matching up with narrow blocks.